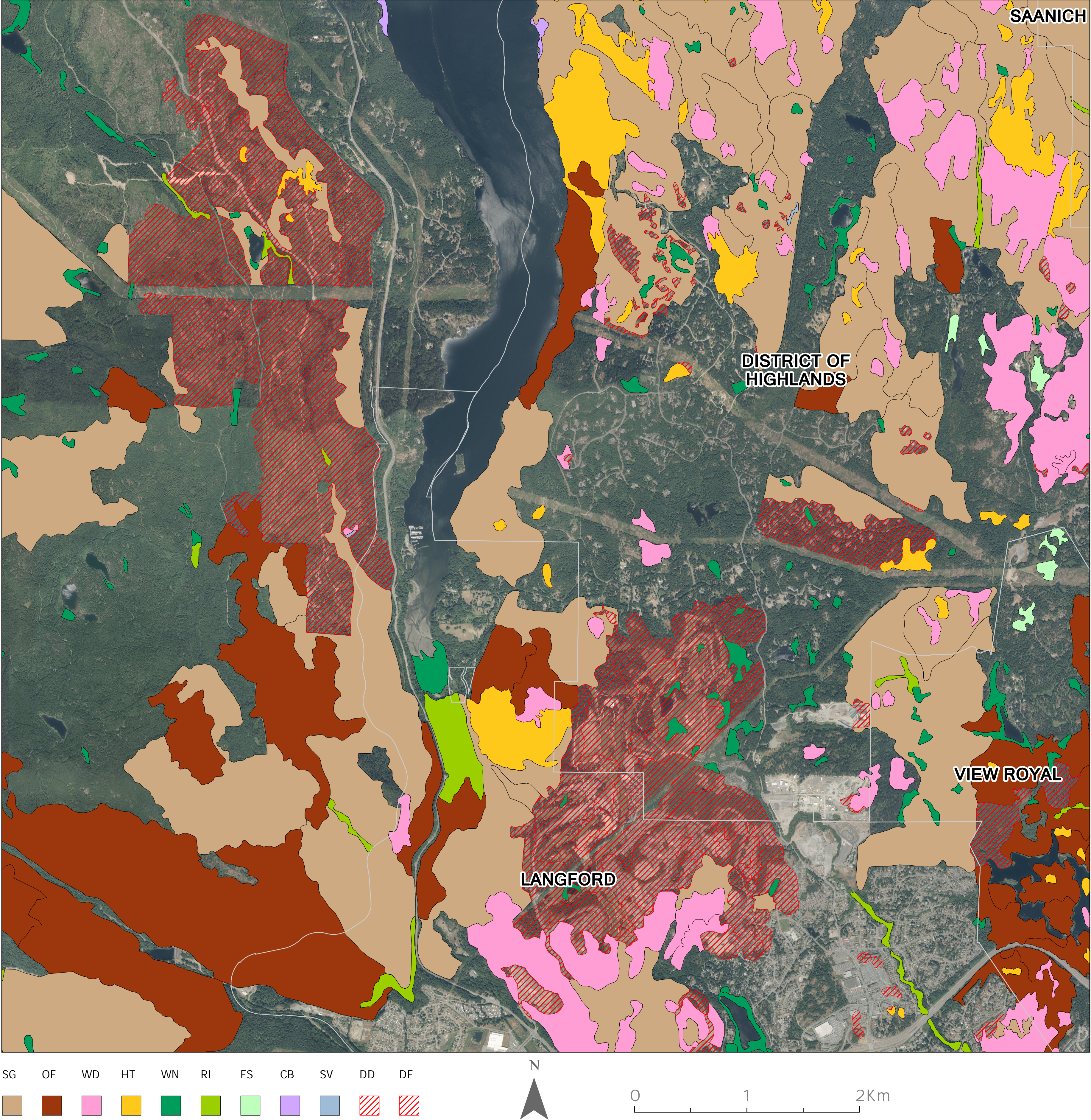
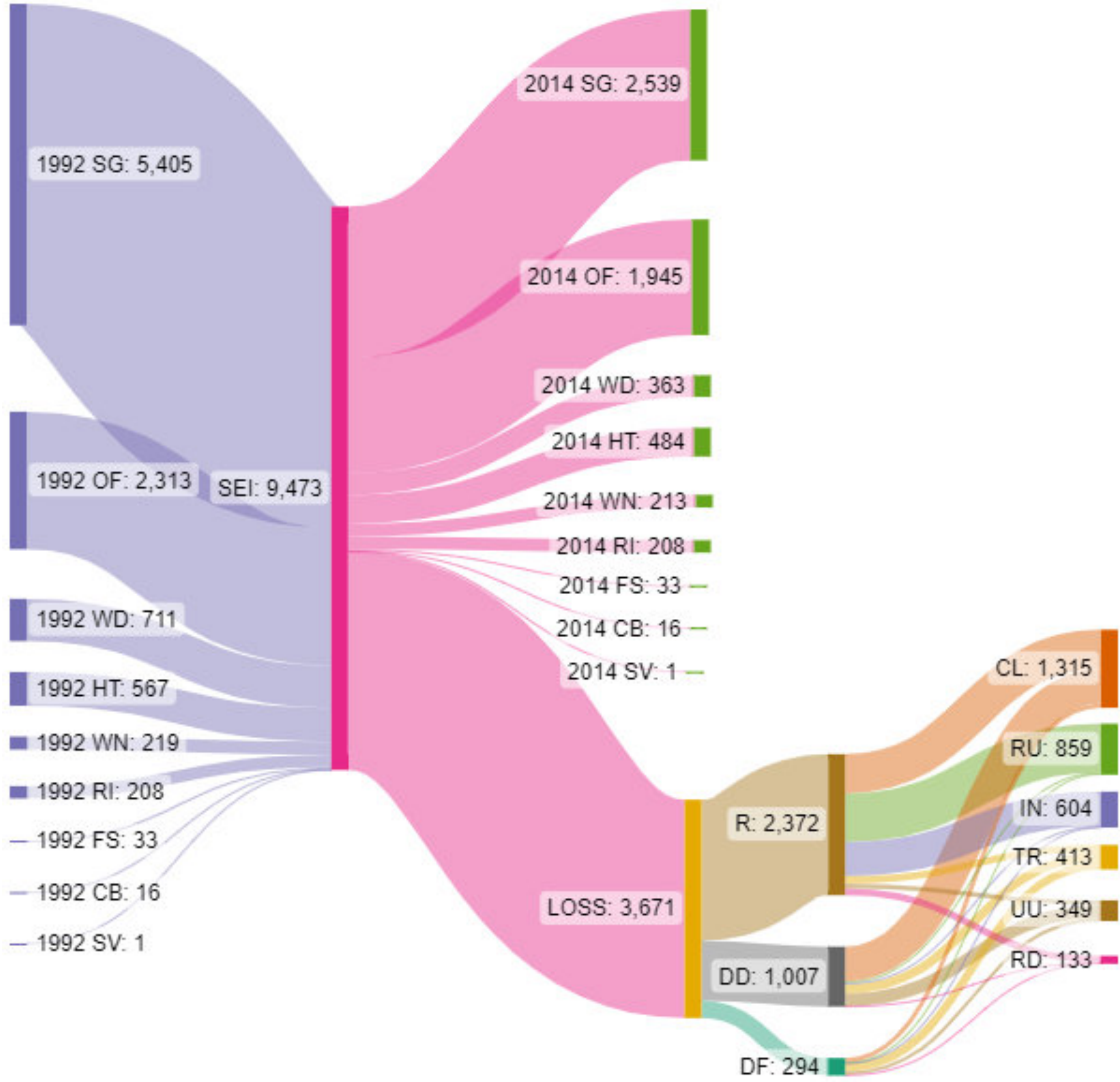


# SENSITIVE ECOSYSTEMINVENTORY (SEI) COMPARISON BETWEEN1992 & 2014: DIGITIZED CHANGE & LOSSQUANTIFICATION

SEI 2014 with Ecosystem Loss Digitized on 1992 SEI Polygon based on WMS Imagery. Below is a zoomed in view of City of Langford within Study Area near Victoria, BC.



1992 vs. 2014 Ecosystem Loss expressed as Area in Hectares within selected Study Area



3,671 ha out of 9473 ha of sensitive ecosystem from 1992 SEI within selected study area was lost/modified in 2014.

Sensitive ecosystem categories used in the SEI are:  
SG = Older Second Growth Forest - large stands of conifers 60 to 100 years old.  
OF = Older Forest - forests older than 100 years, dominated by conifers.  
WD = Woodland - open forests dominated by deciduous trees with canopy cover generally less than 50%.  
HT = Terrestrial Herbaceous - mosaics of coastal grassland meadows and moss- covered rock outcrops.  
WN = Wetland - marshes, fens, bogs, swamps, shallow water and wet meadows.  
RI = Riparian - vegetated floodplains, stream and lake shores and gullies.  
FS = Seasonally Flooded Agricultural Field (FS) - agricultural fields regularly flooded in winter months.  
CB = Coastal Bluff - vegetated rocky islets, shorelines and coastal cliffs.  
SV = Sparsely Vegetated - dunes, spits and inland cliffs.

Type of modification made to the SEI polygons:  
R = Reduced: some portion of this polygon has been deleted due to disturbance, thus reducing the size of the intact ecosystem.  
DD = Deleted due to disturbance. This flag functionally toggles the polygon on/off based on the temporal scenario being mapped.  
DF = Deleted due to fragmentation; greater than 25% of the polygon has been fragmented by disturbances too small to be mapped individually.  
R = Reduced: some portion of this polygon has been deleted due to disturbance, thus reducing the size of the intact ecosystem. (symbolized on map as original ecosystem category)

Disturbance type which caused the deletion of the polygon or portion of the polygon  
CL= Clearing /Logging  
RU = Rural Use  
IN = Industrial Activity  
TR = Trails /Recreation  
UU = Urban Use  
RD = Roads